

RUCKUS KEY PLAYER OF CHANGE= “NETWORKED LIVING” CONCEPT



Customer

Change=

Location

Holland

Change= is an innovative company in the real estate and property management sector. As a young company, Change= understands the need of a good high performance network the young professionals living in the Change= building require.

Their “Networked Living” concept is aimed at young professionals between the ages of 18 and 36. The term “Networked Living” is used among their residents to describe the way of living at Change= as a service that’s sustainable, interconnected, and innovative, with community as the central feature.

Because the world is changing from owning to using, Change= continuously adapts the living concepts to this—offering their residents something new. No more buying and selling, but pay by use, when and for as long as needed.

Requirements

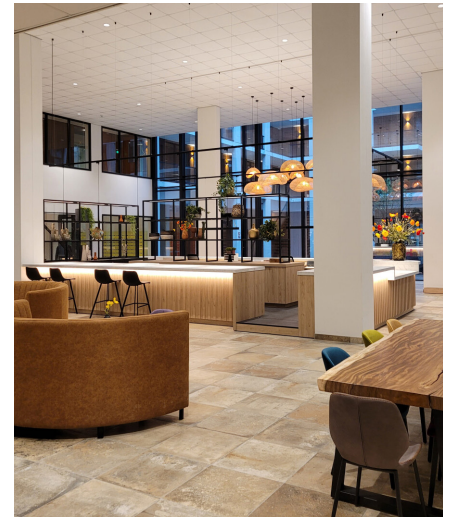
- Elevate resident experience (self-onboarding)
- Network split in VLANs
- Support a wide range of users/device types
- Network security
- Network reliability
- Affordable home offer
- Easy network management
- Provide a low emission/zero home
- Innovative solution

Solution

- RUCKUS® Wi-Fi 6 access points (APs)
 - H510
 - R350
- SZDataplane144
- RUCKUS SmartZone™ controller
- RUCKUS Cloudpath®

Key outcomes

- All-in-one platform/simple and safer user experiences
- Separated network per each studio
- High-density coverage
- Onboarding security
- Always-on network
- Cost-effective solution
- Network visibility/control
- Improved energy efficiency
- Future-proof technology



Residential complex challenges scenario

The world is moving from a culture of ownership to one of access and sharing. This trend is particularly evident among young professionals, who are seeking a more flexible and sustainable way of living that is always on. In this context, it is essential to provide residents with high-speed internet with seamless connectivity that meets their diverse needs for work, entertainment and personal communication.

Building a secure and robust wireless network in densely populated habitat like multi-dwelling units (MDUs) presents unique challenges.

Apartments often have a high concentration of users and devices in small areas. This leads to network congestion and reduced performance.

The scenario described involves a multitude of access points, resulting in a complex radio frequency (RF) environment with lot of users and huge number of smart devices demanding high-bandwidth wireless applications that can lead to congestion, interference and signal quality reduction.

The residents of MDUs expect instant communication and online access to property facilities/ information. To meet the expectations of these digital residents, self-onboarding/management is crucial. This can be achieved by adopting technology and self-service solutions. However, it is important to ensure that the network infrastructure is secure and tamper-proof to prevent unauthorized access.

Previous experiences have shown that, without proper safeguards, the integrity of the network can be compromised by individuals attempting to modify the security settings of APs. Therefore, implementing measures that prevent such tampering—like providing every single studio with secure access to its own VLAN throughout the building—is crucial for the overall health of the network.

All-in-one platform

The solution to such challenges lies in a technical approach that leverages an all-in-one platform capable of onboarding and enabling self-management by the users (property tenant/MGMT portal). Such a platform not only simplifies the user experience but also empowers tenants through a management portal designed

“Clearsky Networks makes sure the network equipment remains in great condition by performing periodic site surveys and network maintenance. We get great feedback on how easy it is to onboard, the performance and overall coverage. Users know they are in a secure environment, which is very important, as living at Change= is all about high level services.”

Akaash Gangadien
Change= IT Director



for their specific needs. The emphasis on technical high performance Wi-Fi® solutions helps that the network remains resilient, scalable, and user friendly.

The project was successfully completed thanks to amazing work between the RUCKUS team and Clearsky Networks.

“Our main advantage was our technical expertise and the ability to provide an all-in-one platform for onboarding, managing and self-managing by the users themselves (property tenant/client MGMT portal)”, said Ief Kox, CEO, Clearsky Networks.

“The BeamFlex adaptive antenna technology integrated into the access points and the excellent onboarding and security features through Cloudpath were decisive for choosing RUCKUS solutions”, added Ief.

600 H510 APs and 75 R350s were strategically installed, taking into account user density to efficiently handle concurrent connections. RUCKUS APs with patented BeamFlex®, SmartCast™ and ChannelFly® technologies optimise signal and channel performance in demanding apartment complexes like this one.

The H510 APs enable a range of wired and wireless services to be provided in MDUs with just a single cable pull per room—eliminating the need for additional switches and power supplies.

The deployment of SmartZone™ 144 Data plane appliance is aimed at enhancing both redundancy and reliability, while simultaneously bolstering security. This is achieved as each AP establishes a secure, encrypted tunnel to the central network, ensuring heightened security. Furthermore, every device connected to the building's wired network, including the APs, must undergo authentication via the 802.1X protocol. However, devices directly connected to the wired ports of the APs are exempt from this authentication requirement.

All APs and switches are centrally managed by the RUCKUS SmartZone™ controller, simplifying the network setup and management through a common interface.

“Clearsky Networks makes sure the network equipment remains in great condition by performing periodic site surveys and network maintenance. We get great feedback on performance; users know they are in a secure environment, which is very important, as living at Change= is like living at their homes”, stated Akaash Gangadien, Change= IT Director.

“Our main advantage was our technical expertise and the ability to provide an all-in-one platform for onboarding, managing and self-managing by the users themselves (property tenant/client MGMT portal)”

Ief Kox
CEO, Clearsky Networks



Meeting the living expectations at Change=

The residents of Change= do not just inhabit spaces; they live in a networked ecosystem—a community connected with the cutting-edge Wi-Fi technology provided by RUCKUS Networks solutions, which perfectly fit with Change= property's vision of sustainable, innovative, connected living.

RUCKUS Networks delivers always-on Wi-Fi access that makes a powerful first impression because the network does not just connect devices; it connects lives—creating a living experience that's not just about the space, but the quality of life enabled by technology.

Residents can enjoy instant Wi-Fi connectivity when they move in, without any installation hassles. The patented RUCKUS signalling technology ensures reliable, high-performance connectivity in each apartment and throughout the property.

"We receive very positive feedback on network performance, and users are confident that they are in a secure environment, which is very important as this is their home. Additionally, the access points are tamper-proof, as even a hard reset would not allow the user to gain access to the network", concluded Akaash.



Clearsky Networks, located in Dessel, Belgium, is a leading provider of vendor-independent wireless networking solutions. With a focus on technical excellence, the company offers services such as Site Surveys, Wi-Fi Implementation, and Electromagnetic Interference (EMI) Detection.

Clearsky Networks experienced team is dedicated to enhancing connectivity and minimizing downtime for a diverse range of sectors, ensuring that clients receive the most efficient and cost-effective wireless infrastructure. www.clearskynetworks.be/



Change= is a full-service real estate developer and property management company based on a modern living concept for ambitious young professionals. In addition to high-quality studios and apartments, Change= offers a wide range of services to facilitate residents.

Change= fulfills its mission by providing sustainable, state-of-the-art residential complexes. Here, community is central, and the studios, services, well-being and work facilities converge. The term "Networked Living" is used among residents to describe the way of living at Change=.

www.change-is.com



RUCKUS Networks designs and builds truly purpose-driven network infrastructure that meets the strictest requirements of all kinds of enterprise environments. Together with our dedicated go-to-market partners, we enable customers to deliver exceptional network experiences, making RUCKUS Networks one of the most trusted brands in the business—a loyal companion ready to help get the job done whatever it takes.

RUCKUS Networks is backed by the corporate resources of CommScope, which powers many of the world's most advanced networks. www.ruckusnetworks.com

www.ruckusnetworks.com

Visit our website or contact your local RUCKUS representative for more information.

© 2025 CommScope, LLC. All rights reserved.

CommScope and the CommScope logo are registered trademarks of CommScope and/or its affiliates in the U.S. and other countries. For additional trademark information, see <https://www.commscope.com/trademarks>. Wi-Fi is a trademark of the Wi-Fi Alliance. All product names, trademarks and registered trademarks are property of their respective owners.

CS-118662-EN (01/25)

RUCKUS[®]
COMMSCOPE